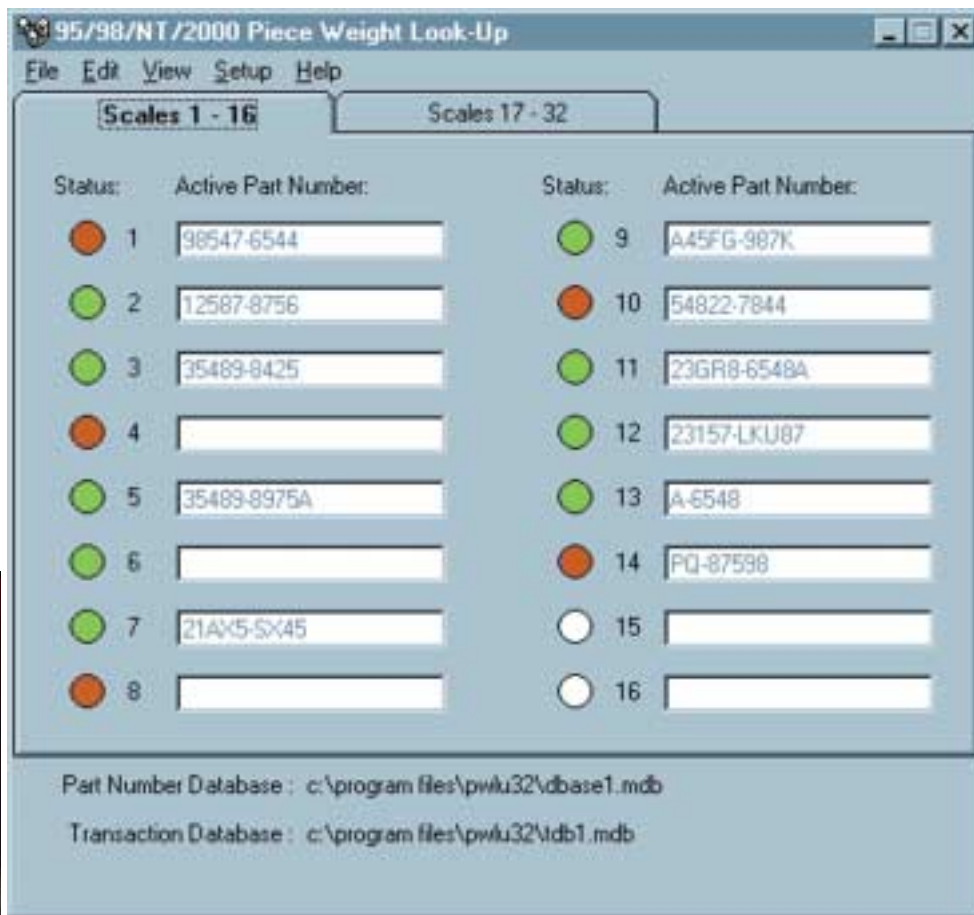


# WEIGH-TRONIX

## Piece Weight Look-Up (PWLU) Program for Inventory Control

- Windows® based system
- Connect up to 32 PC-820 Counting Scales to one PC
- Virtually unlimited memory capacity
- Add/subtract from inventory on a daily basis
- Compatible with Windows® 95/98/NT/2000



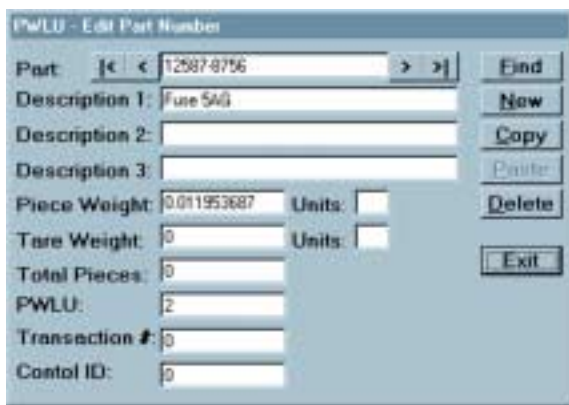
The Piece Weight Look-Up is a Windows® based program designed to link up to 32 Weigh-Tronix Model PC-820 Counting Scales to a single PC. The PWLU provides a part number based, piece weight look-up database (Access 97 format) that allows you to receive and issue parts from the PC-820, while keeping your entire inventory on one shared PC. The PWLU allows scale entry/ modification of Part Numbers, On-line reporting, time and date set up and uses easily installed RocketPort® cards for multiple scale operation. Scales can be configured with RF transmitter/receivers for wireless communication (consult factory).

## PC-820 / PC-821 Piece Weight Look-Up Software



The PWLU features a full status screen displaying information on whether scales are on-line or off-line and the active part number currently being searched along with part number/transaction database details. This screen also allows access to the extensive features of the program such as; report generation, backup, import/export, password protection and scale setup.

The transaction fields supported by the PWLU Program include; Part #, PWLU #, 3 description fields, Count, Piece Weight, Piece Weight Units, Piece Weight Updated, Tare Weight, Tare Weight Units, Scale #, Date, Time, Supplier #, Order #, Delivery Note, Customer Name, and 6 additional generic fields. All fields are limited to 16 characters. The 6 generic fields can be used to accommodate specific application data needs.



Note: The standard application program in the PC-820 currently supports; Part #, Description, Piece Weight, Tare Weight and Count. To access other fields supported by the PWLU Program requires a program change to the PC-820 (consult your distributor).

The Edit screen allows you to edit part information from your PC. Simple features such as: find, new, copy, delete and paste are available at the click of a button to enable easy editing of your database. Import/Export facilities (in an ASCII comma delimited file) allows easy upload/download of your current database to/from other Programs.

The Reports screen allows you to view and print reports by Part Number or Transaction. Each report can contain any of the transaction fields listed above. Up to 5 fields can be sorted either ascending or descending. All records or a range of records may be reported. Reports may be added, deleted, or edited from the setup menu.

The screenshot shows a window titled 'by PartNumber' containing a table with the following data:

PartNumber	PWLU	Description1
12587-8756	2	Fuse 5AG
35489-8425	3	Fuse 3AG
35489-8975A	4	Cap. 2n
98547-6544	1	Diode

At the bottom of the window, there are 'Print' and 'Done' buttons.

### Minimum System Requirements

- Pentium/90 MHZ IBM PC
- 32 MB or RAM
- Microsoft Windows 95/98/NT/2000 or later
- CD ROM Drive for installation
- 32 MB hard disk space
- (1) RS 232 Port RocketPort Cards for multiple scales
- (1) PC-820 Counting Scale

### Recommended System Requirements

- Pentium 300 MHZ IBM PC
- 64 MB or RAM or more
- Microsoft Windows 95/98/NT/2000 or later
- CD ROM Drive for installation
- 100 MB hard disk space
- (1) RS 232 Port RocketPort Cards for multiple scales
- (1) or more PC-820 Counting Scale

Windows® is a registered trademark of Microsoft.

RocketPort® is a registered trademark of Control Corporation

6/01 PWLU\_L.P65 PN 09752-0019 Printed in USA

### Weigh-Tronix

1000 Armstrong Dr.  
Fairmont, MN 56031 USA  
Telephone: 507-238-4461  
Facsimile: 507-238-4195  
e-mail: industrial@weigh-tronix.com  
www.wtxweb.com



### Weigh-Tronix Canada, ULC

217 Brunswick Blvd.  
Pointe Claire, QC H9R 4R7 Canada  
Telephone: 514-695-0380  
Facsimile: 514-695-6820

# WEIGH-TRONIX

Weighing Products & Systems